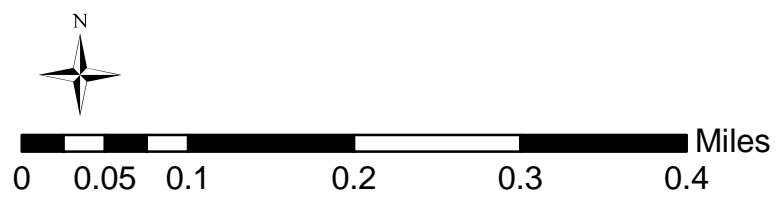
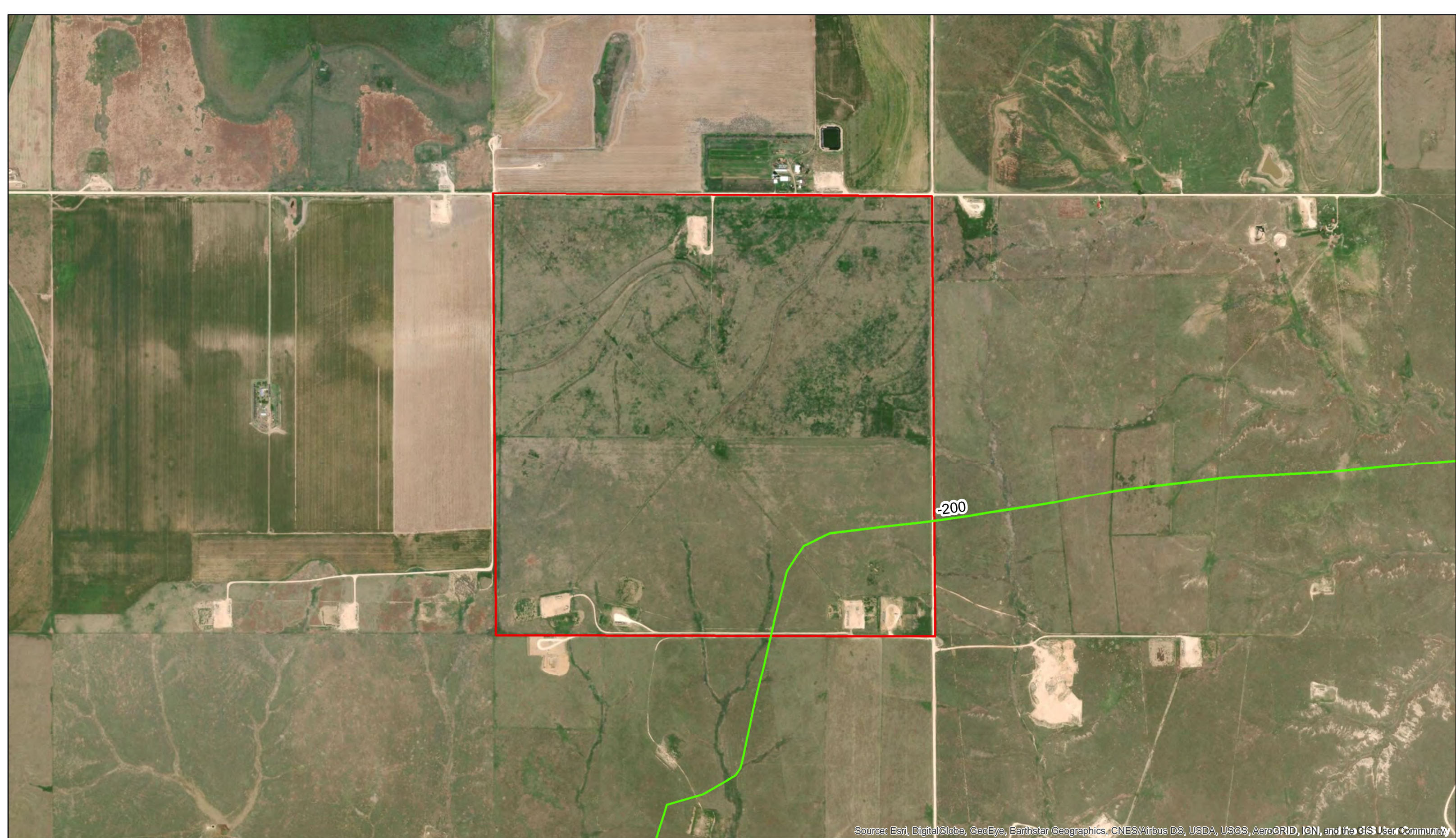


Source: Esri, DigitalGlobe, GeoEye, Earthstar Geographics, CNES/Airbus DS, USDA, USGS, AeroGRID, IGN, and the GIS User Community

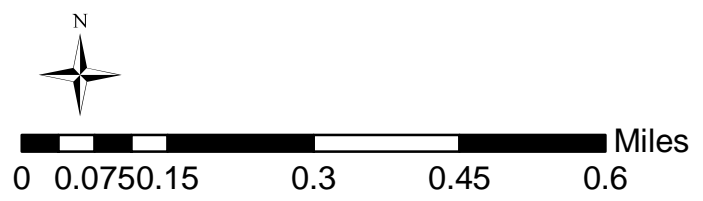


# Section 912, Block 43, H&TC RR Survey Ochiltree Co. Texas



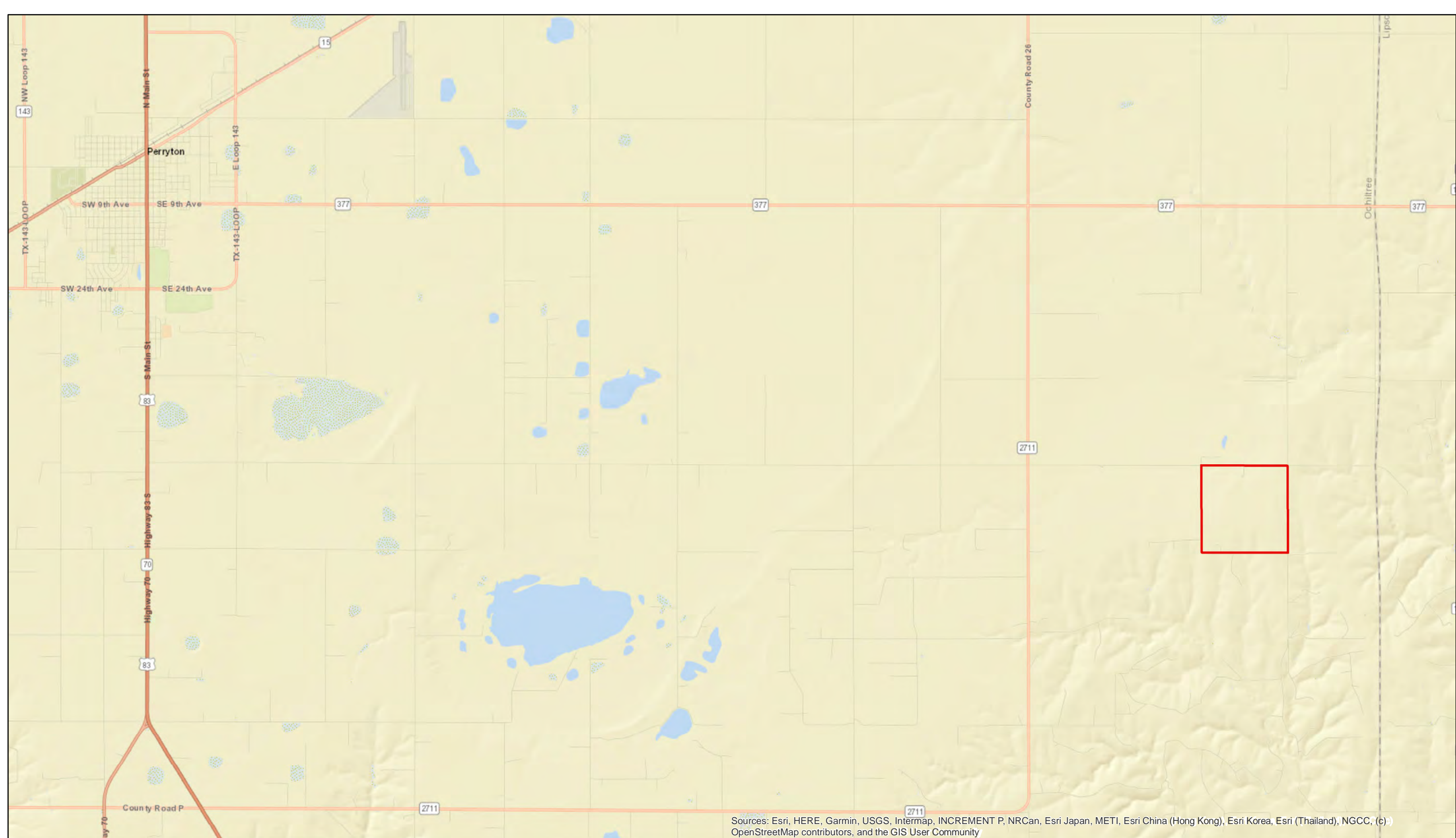


Source: Esri, DigitalGlobe, GeoEye, Earthstar Geographics, CNES/Airbus DS, USDA, USGS, AeroGRID, IGN, and the GIS User Community

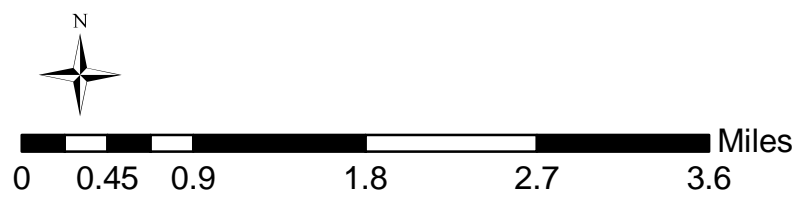


# Section 912, Block 43, H&TC RR Survey Ochiltree Co. Texas, Depth to Water



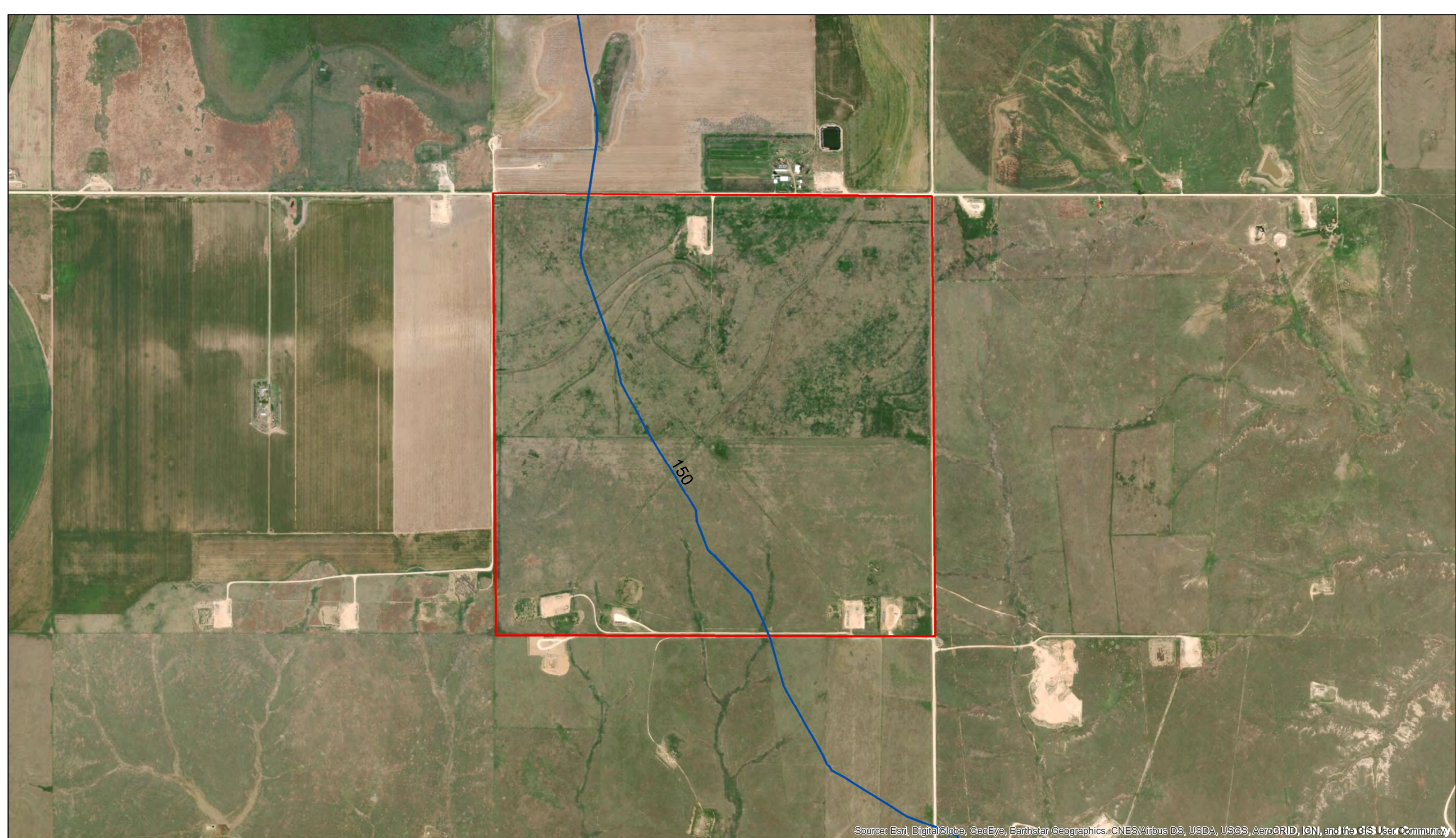


Sources: Esri, HERE, Garmin, USGS, Intermap, INCREMENT P, NRCan, Esri Japan, METI, Esri China (Hong Kong), Esri Korea, Esri (Thailand), NGCC, (c) OpenStreetMap contributors, and the GIS User Community

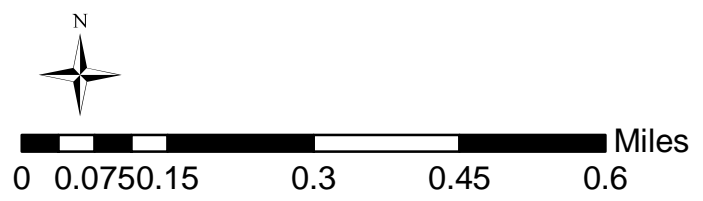


# Section 912, Block 43, H&TC RR Survey Ochiltree Co. Texas



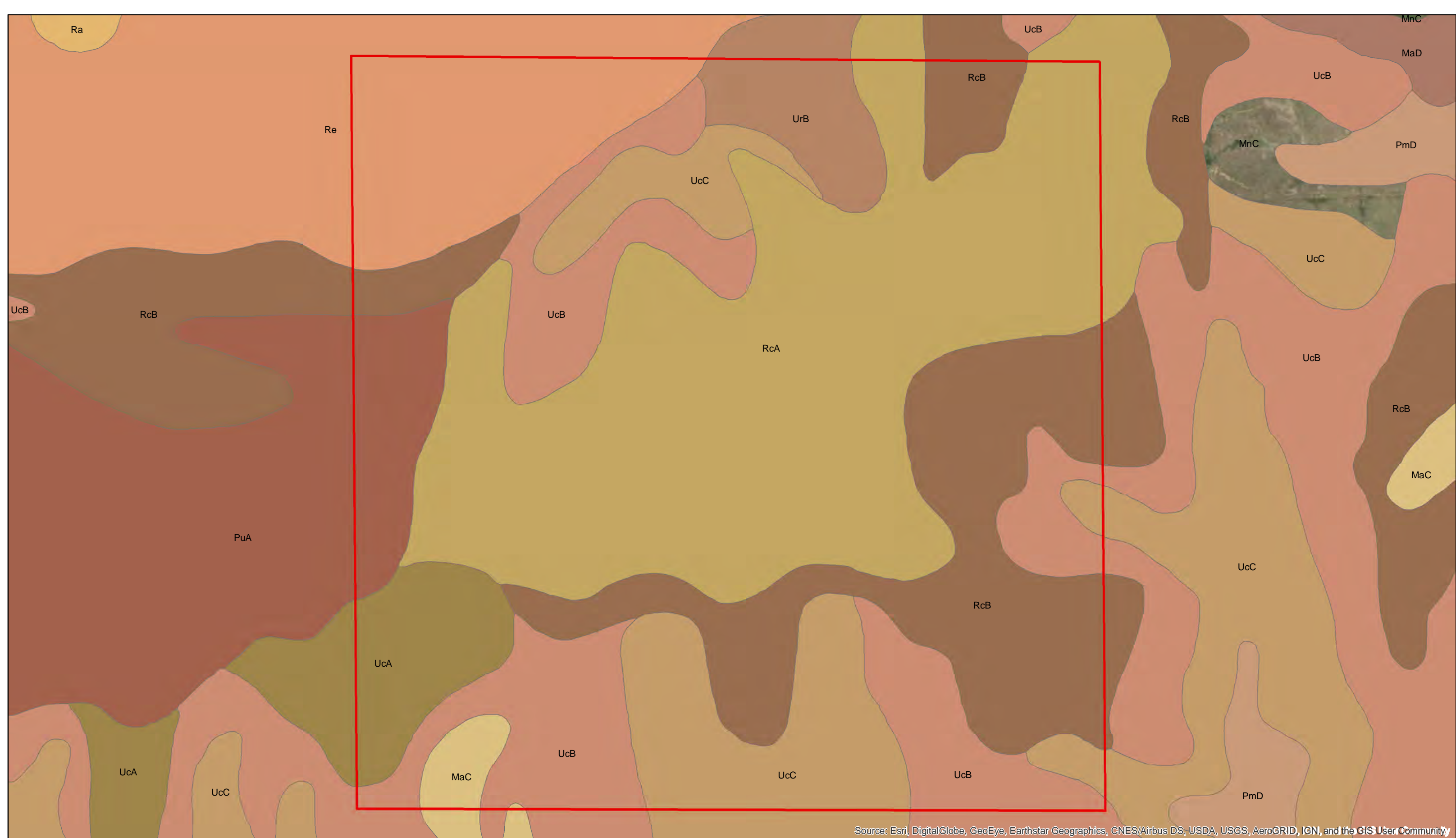


Source: Esri, DigitalGlobe, GeoEye, Earthstar Geographics, CNES/Airbus DS, USDA, USGS, AeroGRID, IGN, and the GIS User Community

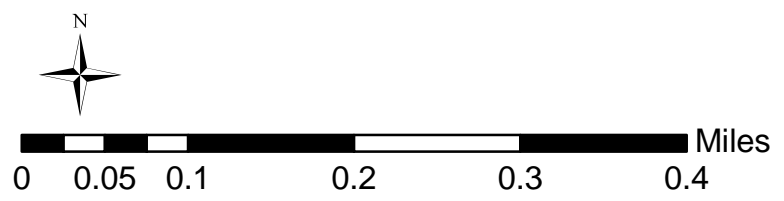


# Section 912, Block 43, H&TC RR Survey Ochiltree Co. Texas, Sat Sands





Source: Esri, DigitalGlobe, GeoEye, Earthstar Geographics, CNES/Airbus DS, USDA, USGS, AeroGRID, IGN, and the GIS User Community



# Section 912, Block 43, H&TC RR Survey Ochiltree Co. Texas

