



905 S. Fillmore St., Ste 102
Amarillo, TX 79101
Phone: 806-355-9856
Fax: 806-358-3481

OCHILTREE CO. SECTION



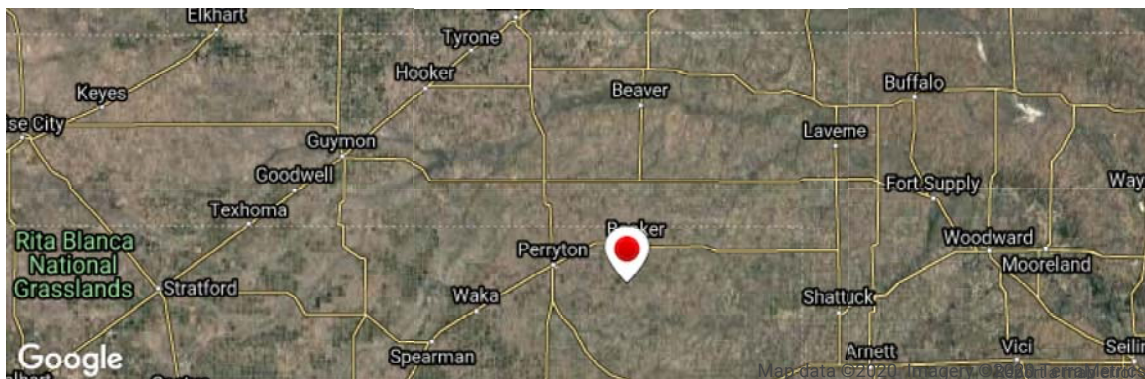


Price: \$772,080.00
Total Acres: 643
Irrigated Acres:
Dryland Acres:
Grass Acres: 249.12
CRP Acres: 394
CRP Payments:
CRP Expiration: 2020
Taxes: 1485.62
FSA Payments:
Mineral Rights: none conveyed

CLB - Ochiltree Co. Section



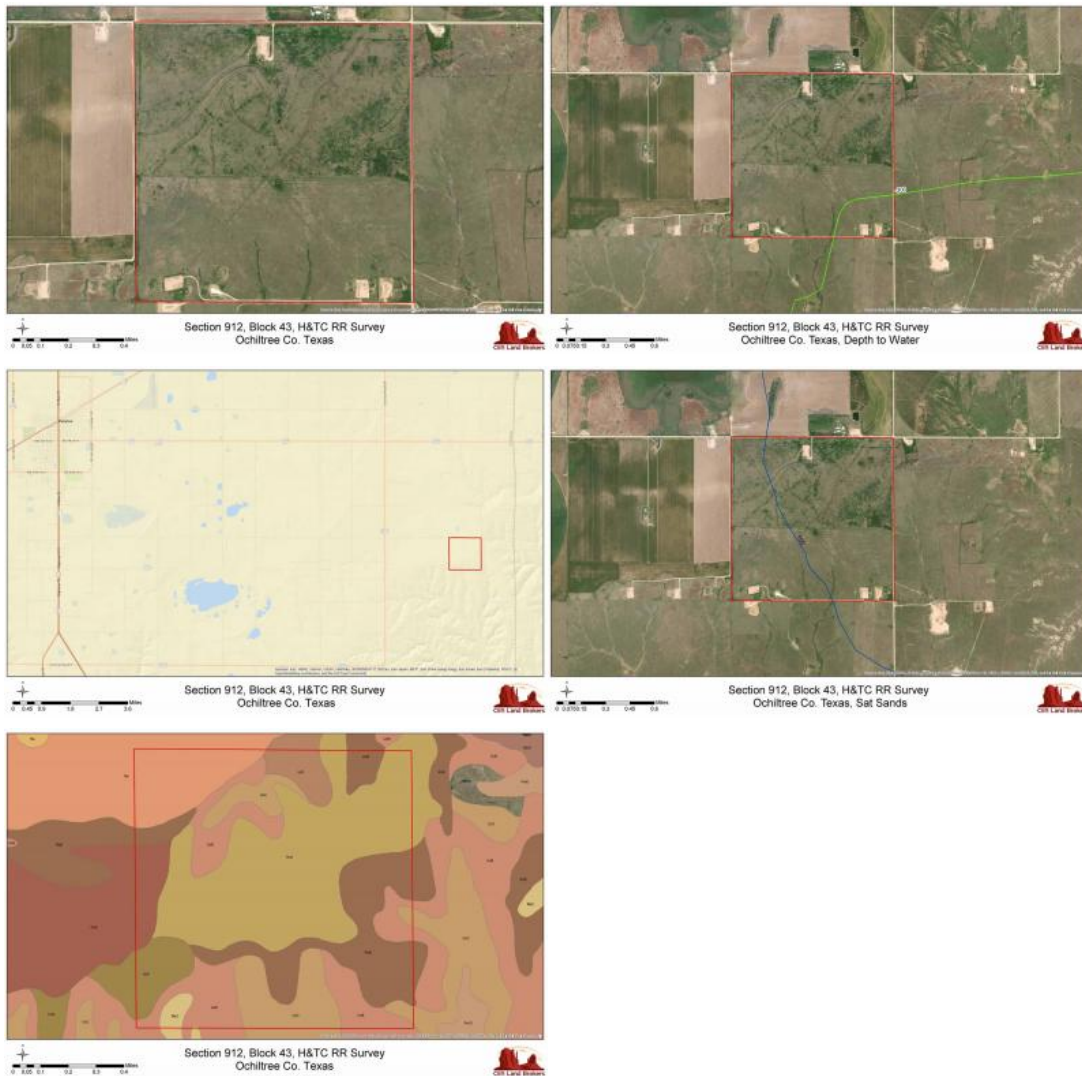
This is an excellent CRP and Native grass tract adjacent to an all weather road and two miles off pavement. The property has very good soils, slightly sloping to the South and North. The current CRP contract expires in 2020, at which time, the property could be developed for farmland or range land. There is good water in the area. Adjacent properties have been developed with good irrigation. There is one livestock water well located on the property, with a submersible pump and connected to electricity. This is an excellent opportunity for both Farmers and Ranchers to develop a property.



From the intersection of FM 377 and FM 2711 3 miles South to County Road L, East on County Road L 2 miles to the corner of the subject property.

Latitude: 36.34123

Longitude: -100.56644



Listing Agent



Greg Good
(<https://www.cliftlandbrokers.com/agent/greg-good/>)

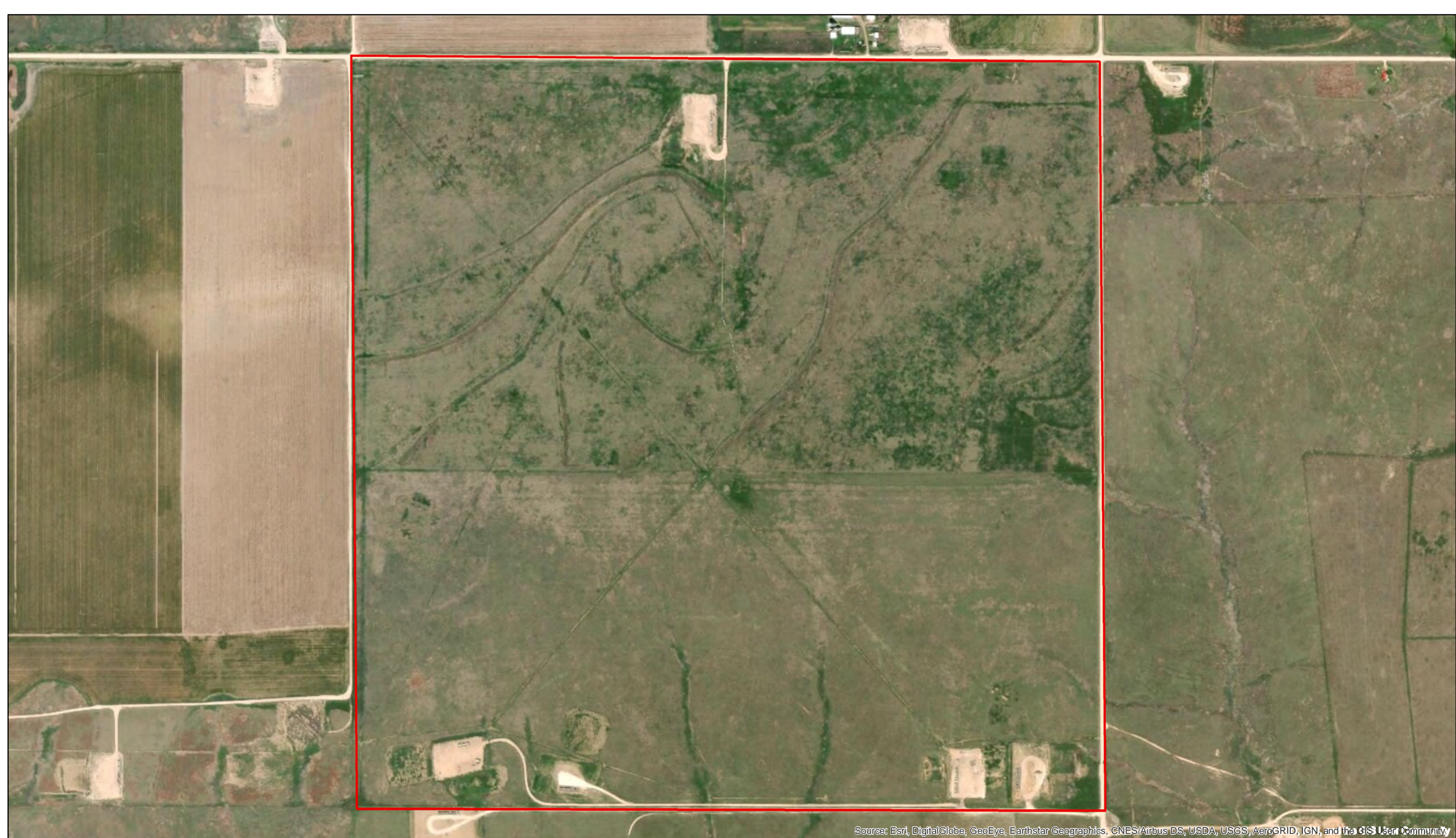
Email
(mailto:Greg@CliftLandBrokers.com)

806-228-8140

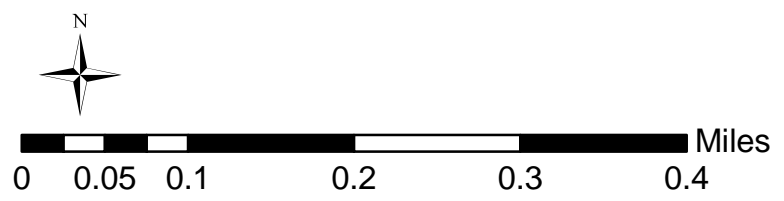
URL to article: <https://www.cliftlandbrokers.com/property/ochiltree-co-section/>

Click here to

Copyright © 2013 Clift Land Brokers. All rights reserved.

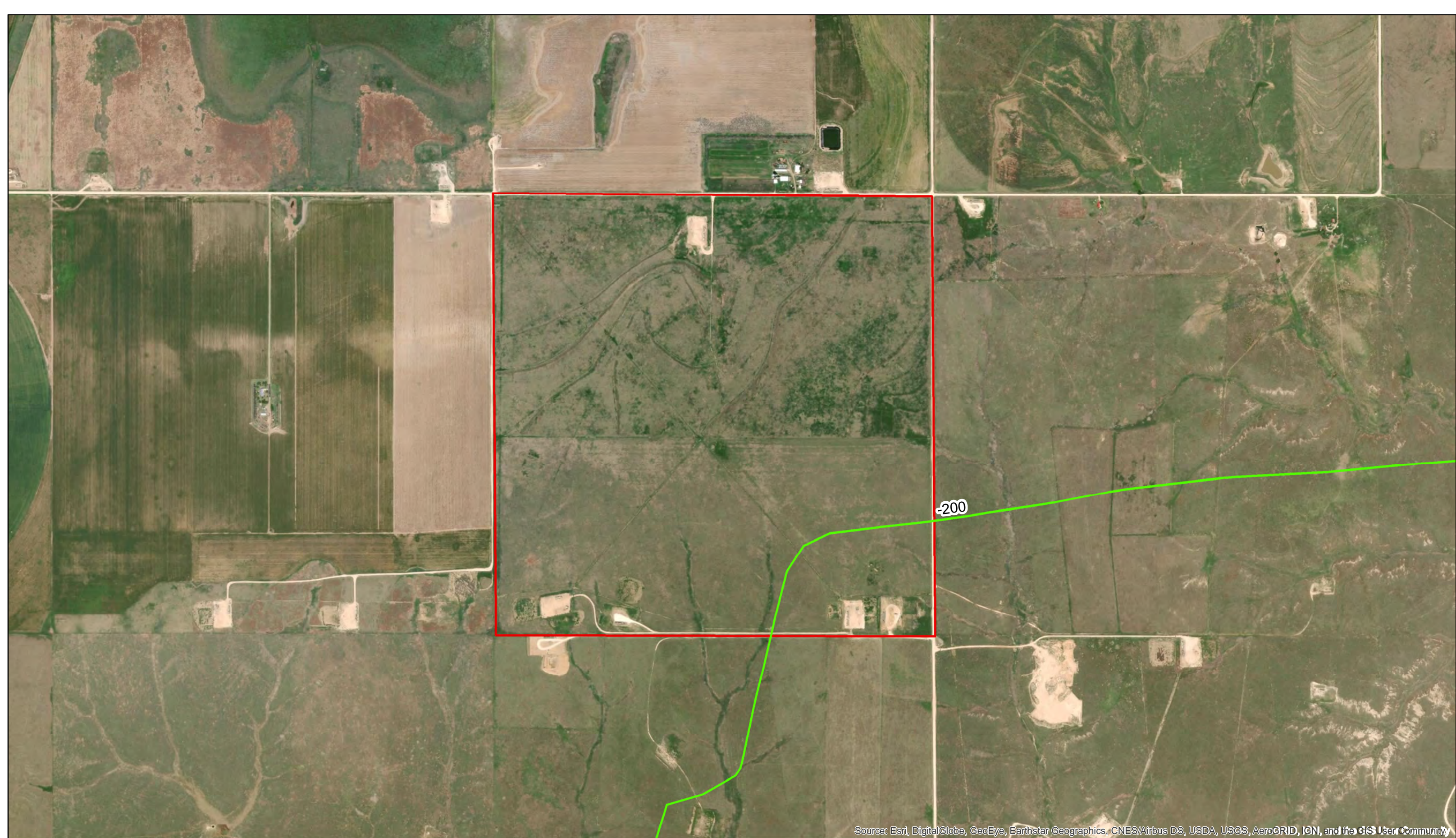


Source: Esri, DigitalGlobe, GeoEye, Earthstar Geographics, CNES/Airbus DS, USDA, USGS, AeroGRID, IGN, and the GIS User Community

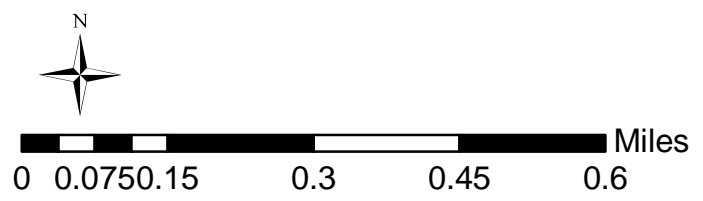


Section 912, Block 43, H&TC RR Survey Ochiltree Co. Texas



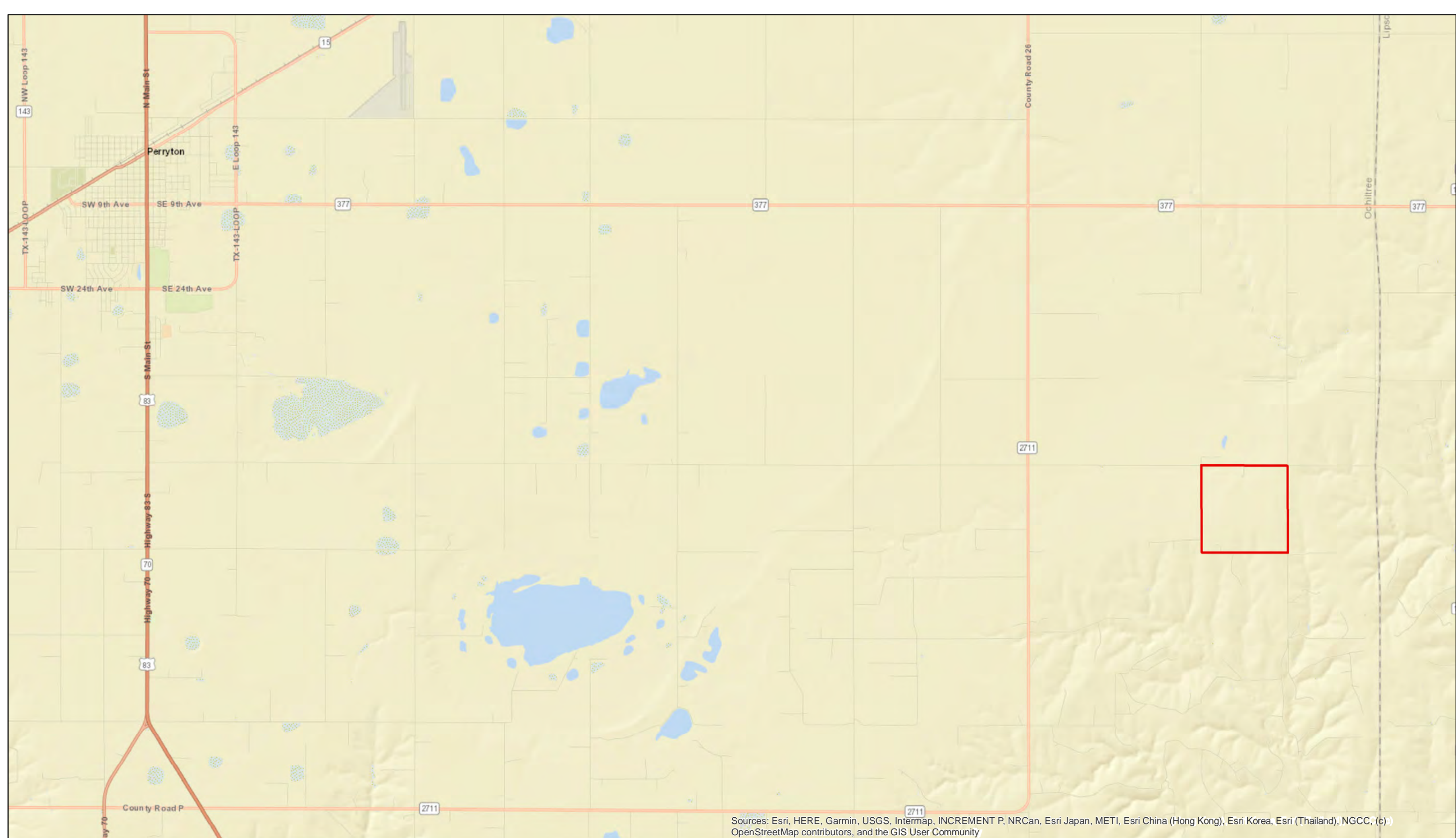


Source: Esri, DigitalGlobe, GeoEye, Earthstar Geographics, CNES/Airbus DS, USDA, USGS, AeroGRID, IGN, and the GIS User Community



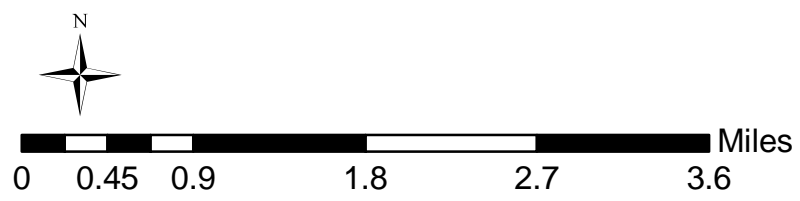
Section 912, Block 43, H&TC RR Survey Ochiltree Co. Texas, Depth to Water

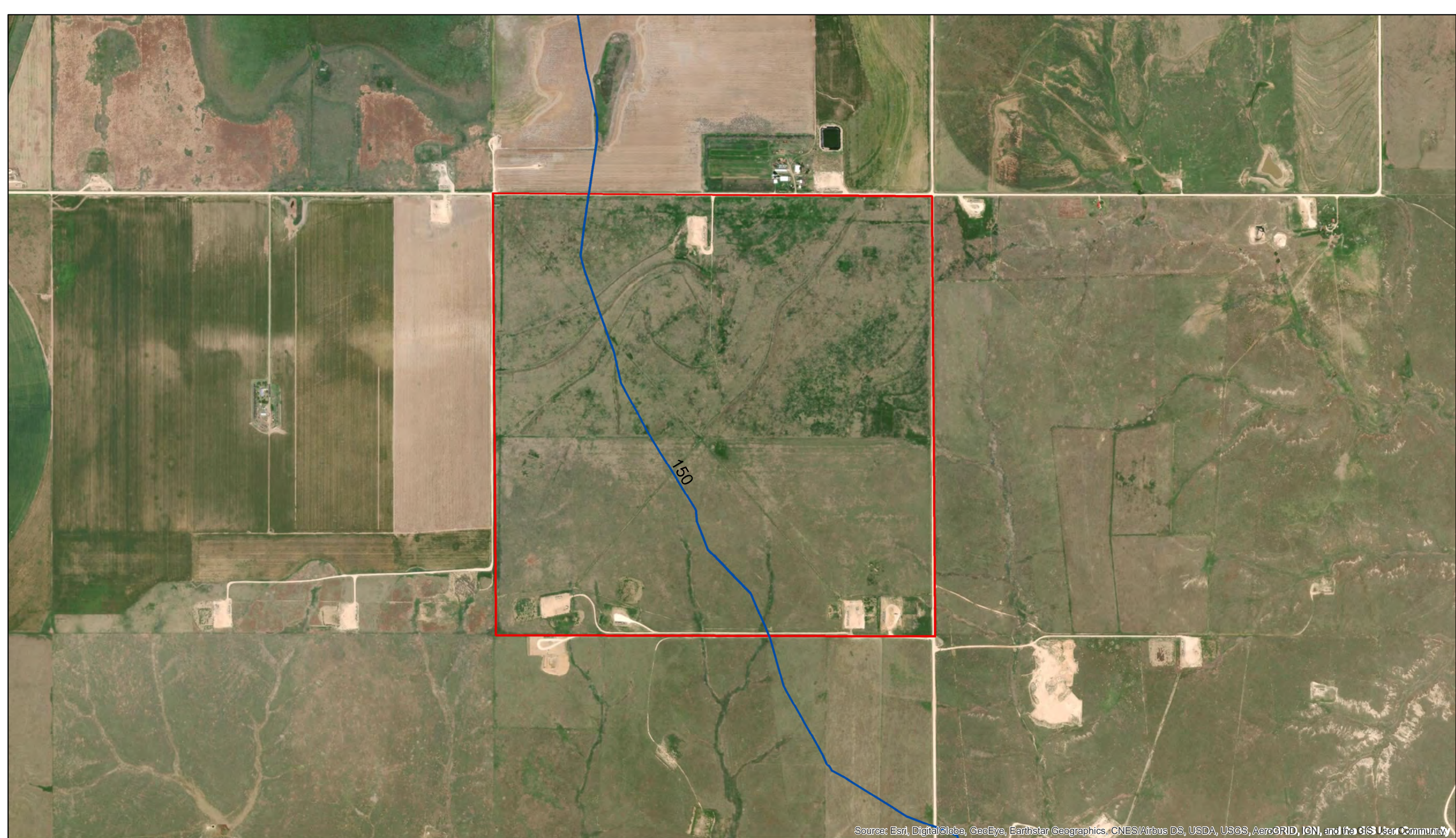




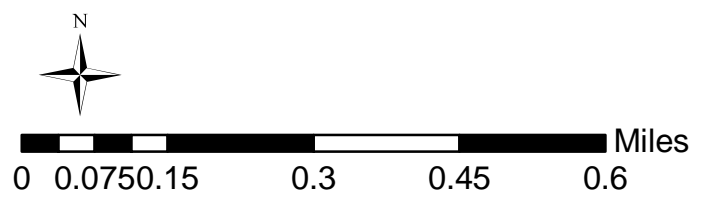
Sources: Esri, HERE, Garmin, USGS, Intermap, INCREMENT P, NRCan, Esri Japan, METI, Esri China (Hong Kong), Esri Korea, Esri (Thailand), NGCC, (c) OpenStreetMap contributors, and the GIS User Community

Section 912, Block 43, H&TC RR Survey Ochiltree Co. Texas



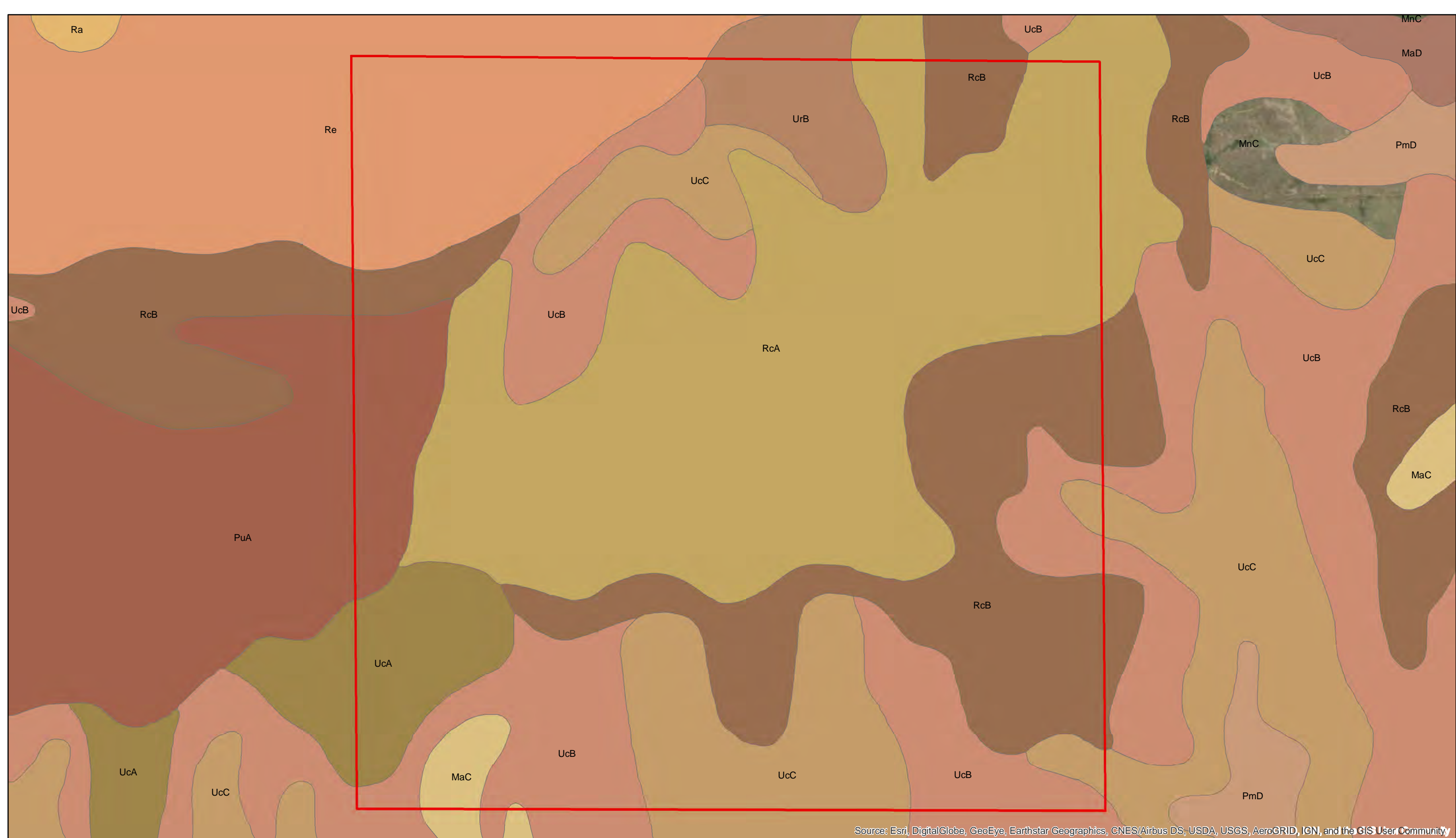


Source: Esri, DigitalGlobe, GeoEye, Earthstar Geographics, CNES/Airbus DS, USDA, USGS, AeroGRID, IGN, and the GIS User Community

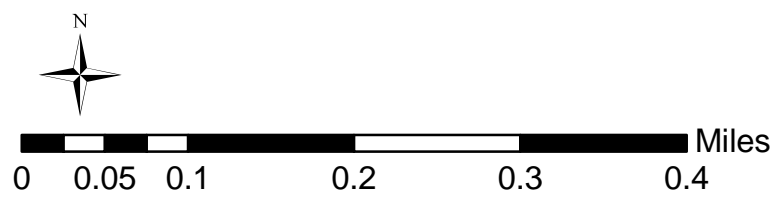


Section 912, Block 43, H&TC RR Survey Ochiltree Co. Texas, Sat Sands





Source: Esri, DigitalGlobe, GeoEye, Earthstar Geographics, CNES/Airbus DS, USDA, USGS, AeroGRID, IGN, and the GIS User Community



Section 912, Block 43, H&TC RR Survey Ochiltree Co. Texas

