

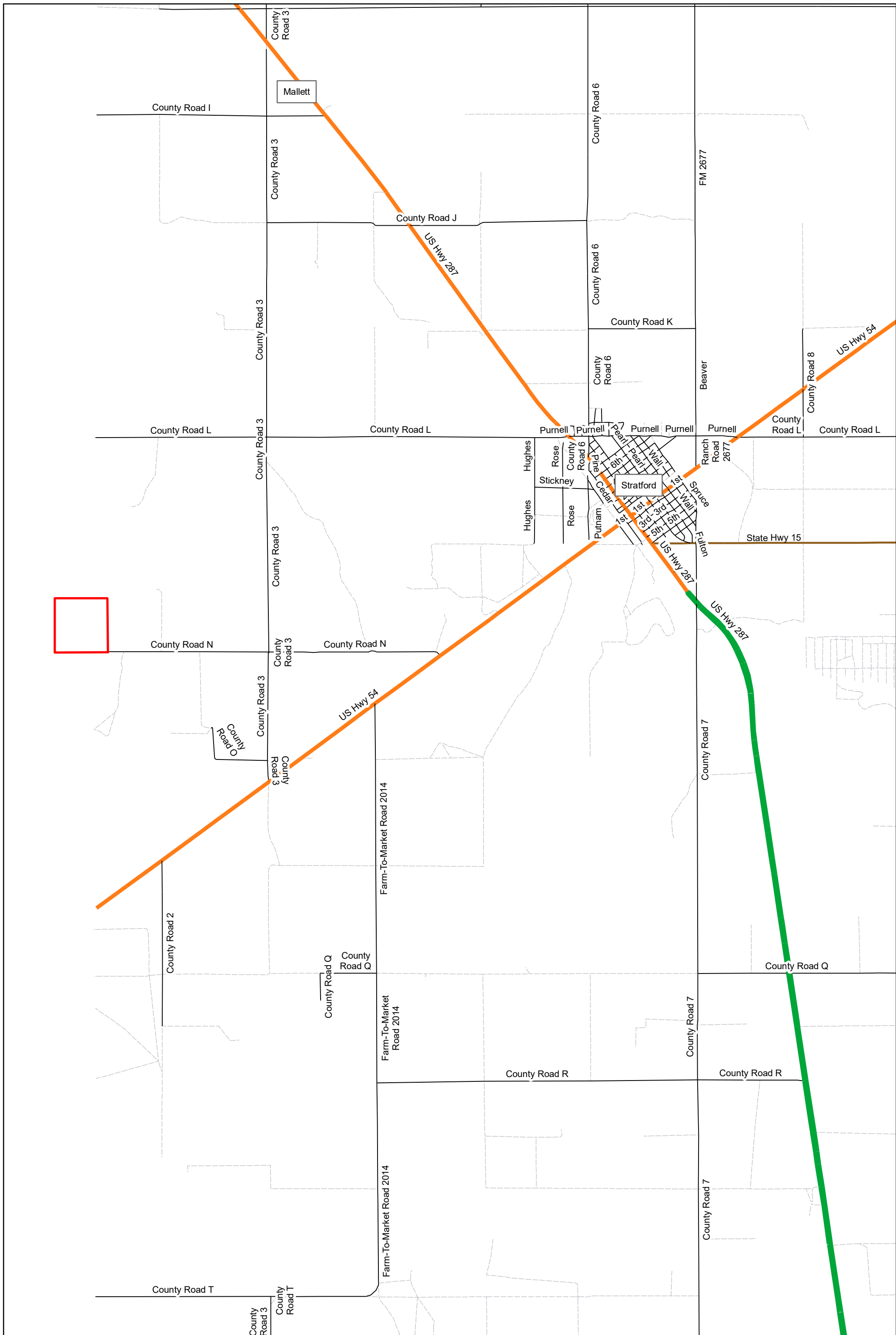
County Road N



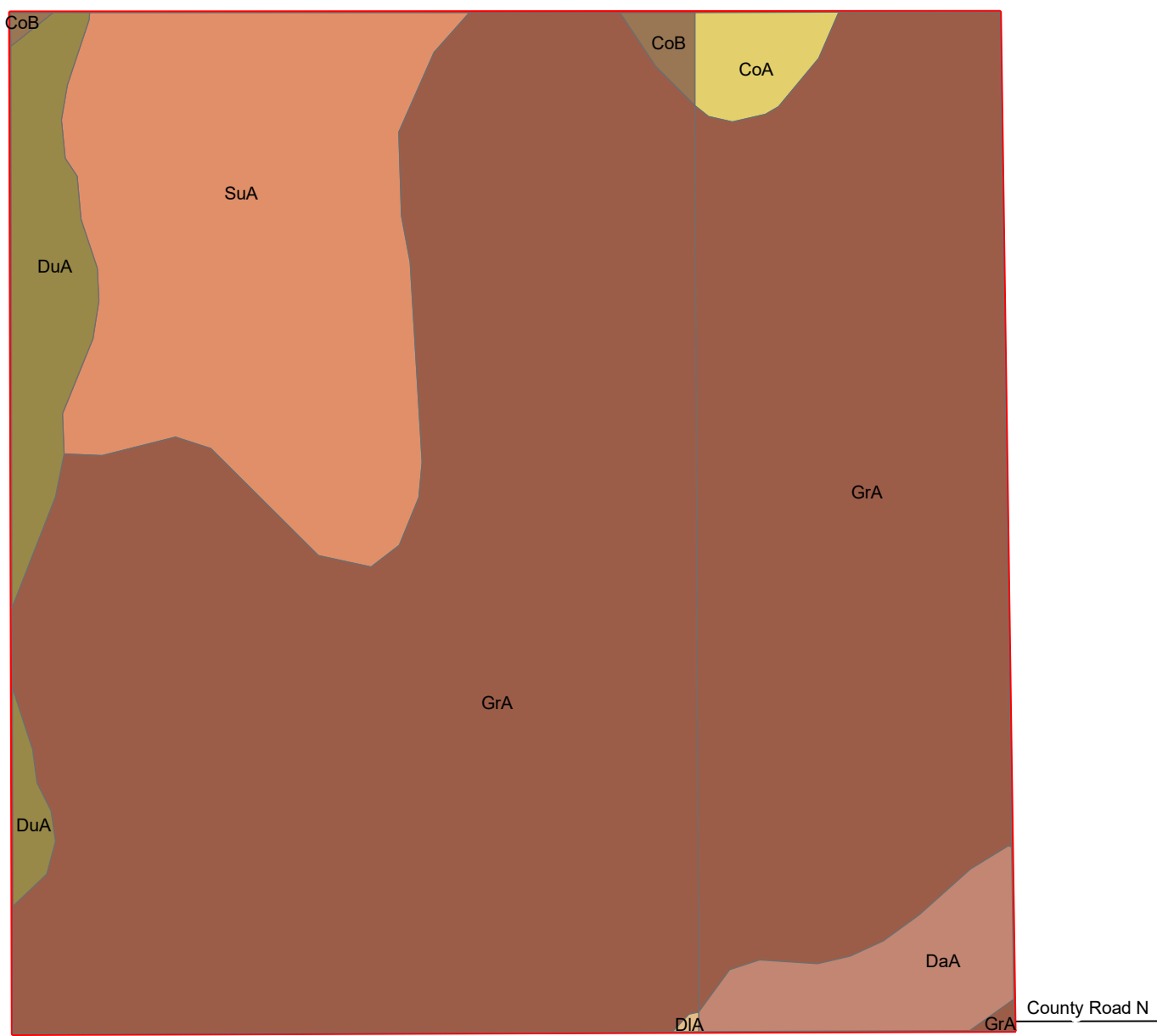
© 2020 Microsoft Corporation © 2020 Maxar © CNES (2020) Distribution Airbus DS

Sherman 201
Aerial



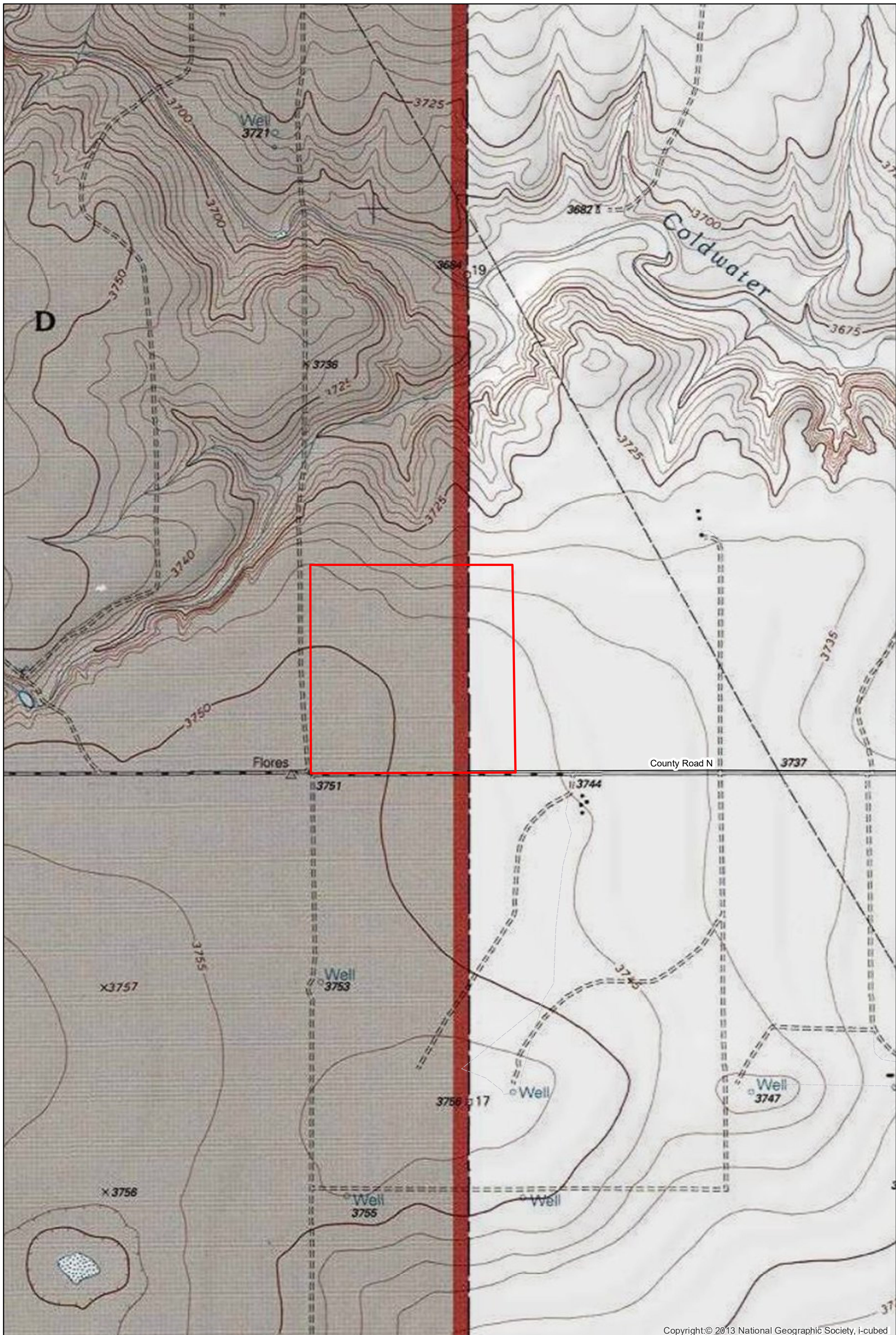


Sherman 201
Rds



- Dallam/Sherman County, TX Soil
- CoA Conlen loam, 0 to 1 percent slopes
 - CoB Conlen loam, 3 to 5 percent slopes
 - DaA Dalhart fine sandy loam, 0 to 1 percent slopes
 - DuA Dumas loam, 0 to 1 percent slopes
 - DIA Dallam fine sandy loam 0 to 1 percent slopes
 - GrA Gruver loam 0 to 1 percent slopes
 - SuA Sunray loam 0 to 1 percent slopes

Sherman 201 Soils



Copyright:© 2013 National Geographic Society, i-cubed

Sherman 201
Topo

