

Cimarron County, OK

Boise City

Keyes

Directions to the Farm: From Boise City, Oklahoma, take US Hwy 287 southeast approximately eight miles to county road E0260, then east eight miles on E0260. Latitude: 36.624611 Longitude: -102.292775
Legal Description: Section 24, T2N-R7E, Cimarron Co. OK

US-287

E0260

Conrad

Auction Tract



E0260

Well #1

2014 Zimatic
LD2652

2015 Zimatic
LD5566

Well #2

Grow Yard

N0420

Well #3

2015 Zimatic
LD5585

2013 Zimatic
LE9931

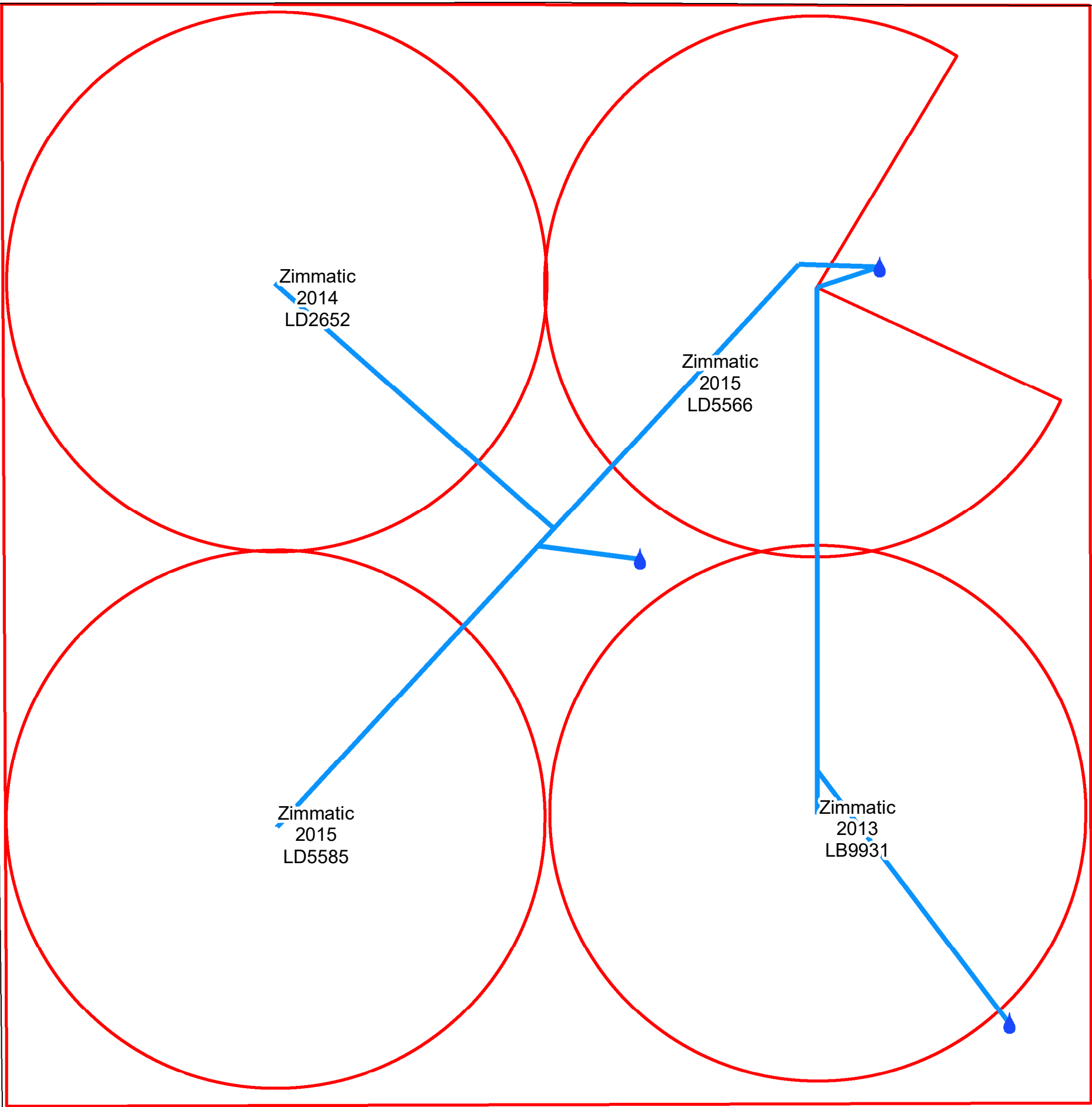
SH 171

Well #5

Residence

Well #4

E0270

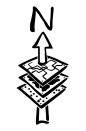


Zimmatic
2014
LD2652

Zimmatic
2015
LD5566

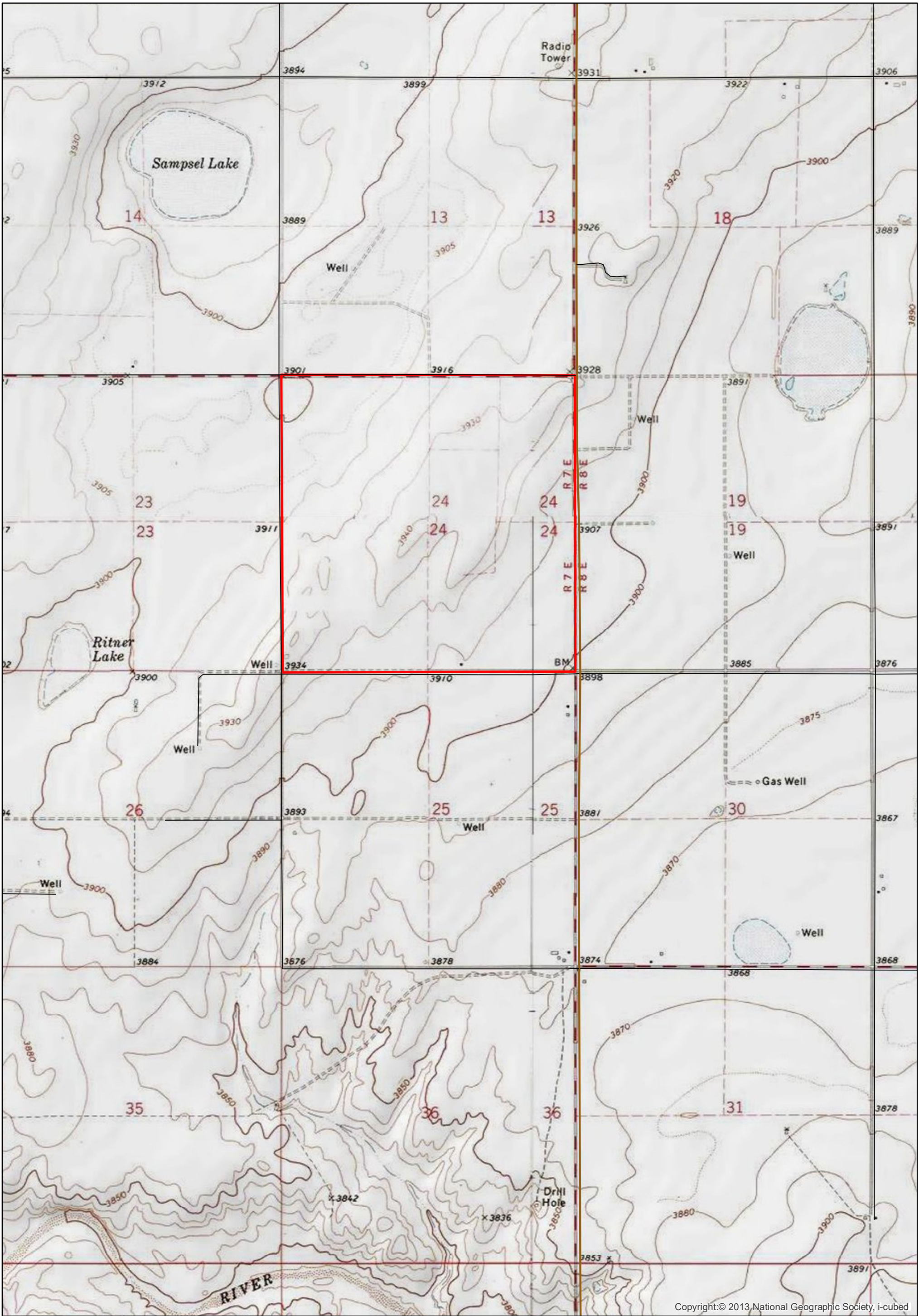
Zimmatic
2015
LD5585

Zimmatic
2013
LB9931



0 425 850 Feet

Copyright [2011] by [Clift Land Brokers]



Copyright:© 2013,National Geographic Society, i-cubed

Clift Land Auctions

0 1,150 2,300 Feet

Copyright [2011] by [Clift Land Brokers]



Source: Esri, DigitalGlobe, GeoEye, Earthstar Geographics, CNES/Airbus DS, USDA, USGS, AeroGRID, IGN, and the GIS User Community



0 425 850 Feet

Copyright [2011] by [Clift Land Brokers]