



HARPER COUNTY RANCH

WOODWARD, OKLAHOMA • OFFERED FOR \$2,166,900



PROPERTY OVERVIEW



THIS IS A VERY NICE CLEAN RANCH IN THE SOUTH-CENTRAL PART OF HARPER COUNTY FEATURING 2,796 GRASS ACRES.

This property offers the blend of rolling hills to deep canyons. The grass has not been abused and has plenty of grazing for new buyers. The canyons and draws offer great year-long protection to cattle and wildlife. Being 30 miles northwest of Woodward, this ranch would offer a close getaway with outdoor recreation, hunting and fishing. If you are looking for a cow ranch that will offer some good wildlife, this ranch needs to be on your list.





Clift Land Brokers

HARPER COUNTY RANCH

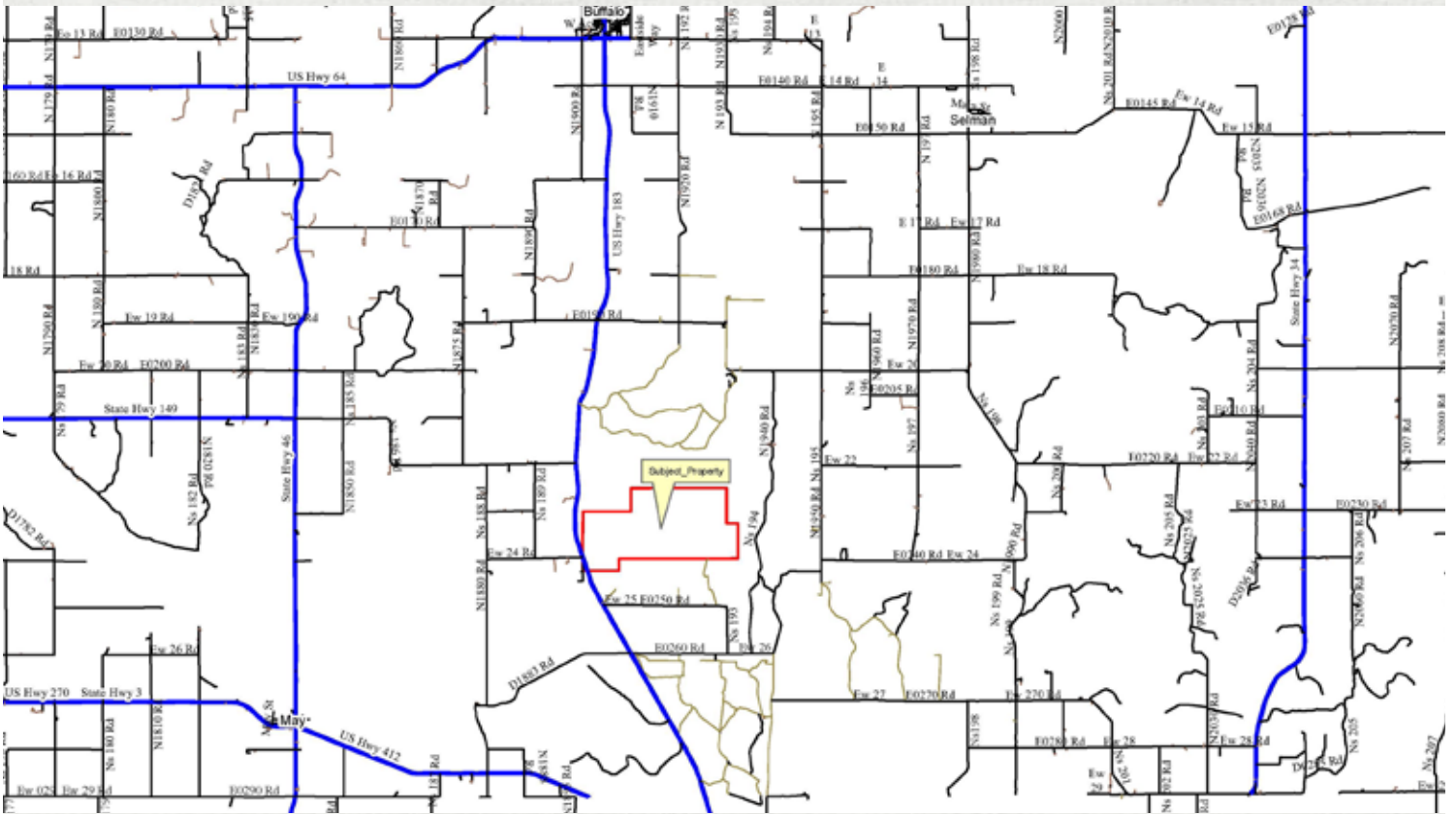
Woodward, Oklahoma • OFFERED FOR \$2,166,900



CONTACT US TODAY TO SCHEDULE A SHOWING:

Bryan Clift • Bryan@CliftLandBrokers.com • 806.679.9421

Clift Land Brokers • 905 S. Fillmore St. STE 102, Amarillo, Texas 79102 • 806.355.9856 • CliftLandBrokers.com



LOCATION: From the intersection of US 412 and 183 (just west of Fort Supply, Oklahoma), go 7 miles north to the southwest corner of the ranch. Latitude: 36.672027 / Longitude: -99.635038



The information contained herein is as obtained by Clift Land Brokers, Amarillo, Texas, from the owner and other sources, and even though this information is considered reliable, neither broker nor owner make any guarantee, warranty or representation as to correctness of any data or descriptions and the accuracy of such statements should be determined through independent investigation made by the prospective purchaser. This offer for sale is subject to prior sale, errors and omissions, change of price, terms or other conditions or withdrawal from sale in whole or in part, by seller without notice and at the sole discretion of seller. Readers are urged to form their own independent conclusions and evaluations in consultation with legal counsel, accountants, and/or investment advisors concerning any and all material contained herein.