

Online Land Auction

320 ± Acres in Texas Co. OK

Two Tracts of CRP Land—15 mi. east of Elkhart, KS

Online Bidding Only

Bidding begins at 8:00 am CST Friday, July 12th
and ends at 12:00 noon CST Thursday, July 18th.

Auction will “soft close” with 5 minute increments until 5 minutes elapses with no new bids.

Tract #1—160 ± Acres

This tract is located at the intersection of county roads E0015 and N0790. 157.1 acres are enrolled in the CRP program with an annual payment of approx. \$5,341.00. This contract will expire 9-30-2022. The 2019/2020 CRP Payment, and all subsequent payments, shall convey to the Buyer and the CRP contract shall be in compliance at the time of closing.

Legal Description: SW/4 of Section 18—T6N—R14E CM Texas Co., Oklahoma

Tract #2—160 ± Acres

This tract is located at the intersection of county roads E0020 and N0790. There are 157.7 acres enrolled in the CRP program with an annual payment of approx. \$5,361.00. This contract will expire 9-30-2022. The 2019/2020 CRP Payment, and all subsequent payments, shall convey to the Buyer and the CRP contract shall be in compliance at the time of closing.

Legal Description: NE/4 of Section 24—T6N—R13E CM Texas Co., Oklahoma



5% Buyer Premium

****This is an Absolute Auction with a minimum bid of \$600.00 per acre.**

Download the Clift Land Auctions App to your mobile devices or bid directly at CliftLandAuctions.com.



Download our Mobile App
and Register to Bid on this Auction.

**See our website for the auction terms and conditions
or call our office to receive a copy.

TX Auctioneer License #16802



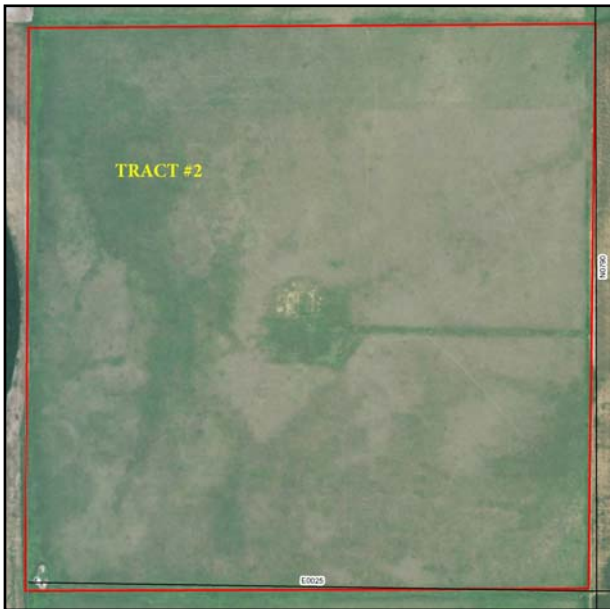
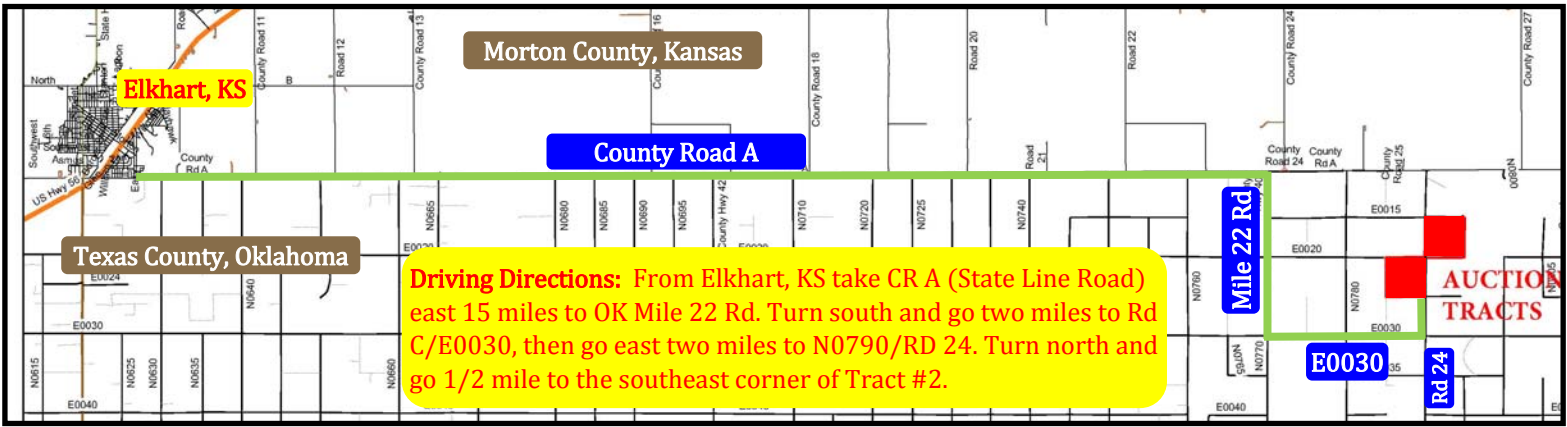
905 S. Fillmore St., Ste. 102 • Amarillo, TX 79101

800.299.LAND (5263)

CliftLandAuctions.com

OK Broker License #138599





DISCLAIMER AND ABSENCE OF WARRANTIES: All information contained in the promotion and advertisement of this auction is believed to be accurate, but is subject to verification by all parties relying on it. No liability for its accuracy, errors or omissions is assumed by the seller, the broker, the auction company or any of their respective representatives. All sketches and dimensions in this brochure are approximate. All acreages are approximate and have been estimated based on legal descriptions or aerial photographs. The property is being sold on an "AS IS, WHERE IS" basis, and no warranty or representation, either express or implied, concerning the property is made by the seller or the auction company. Each potential bidder is responsible for conducting his or her own independent inspections, investigations, inquiries, and due diligence concerning the property. Bidders should completed this due diligence prior to bidding on this auction. Increments of bidding are at the direction and discretion of the auction company. The seller, broker and auction company reserve the right to preclude any person from bidding, if there is any question as to the person's credentials, fitness, etc. All decisions of the auction company are final.